

Comprehensive Vascular Diagnostic

Cardiovascular Assessment and Risk Evaluation

@  **Cumberland Cardiology, P.A.**

Please call 910-323-0065 for an immediate appointment



Comprehensive Vascular Diagnostic

Vasogram CARE Program



Simplifying

- Cardiovascular Assessment and Risk Evaluation one beat at a time!

A comprehensive system for

- Measuring your atherosclerotic burden
- Predicting your ten years' risk of having heart attack or stroke

Fulfills your need to know and how to try to live longer



**EATING HEALTHY
DECREASES YOUR RISK OF**

- Stroke
 - Heart Attack
 - Diabetes Mellitus
 - Sudden Death
 - Obesity
 - Impotence
 - Hypertension
 - Cancer
- and many more benefits...!

Vasogram Technology at Work for Your Heart!

The Vasogram Module in our Preventive Cardiology Program provides a comprehensive system for measuring Atherosclerotic Burden, early detection of Coronary Arterial Disease, potential Stroke and overall arterial health.

The test is rapid and painless and can be performed with no risk to the patient in a physician's office. In addition, the cost of the testing is competitive with other noninvasive cardiovascular tests.

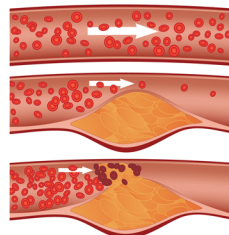


Vasogram Test is 90% Sensitive and 90% Specific in Determining Your Risk for Having a Heart Attack or Strokes within Ten Years!

RISK FACTORS FOR HEART DISEASE AND STROKE

People with heart disease have twice the risk of stroke as people with healthy hearts. Other risk factors include:

- High blood pressure
- High Cholesterol
- Diabetes Mellitus
- Smoking Cigarettes
- Illicit Drug Use
- Sickle-cell Anemia
- Family History of Stroke
- Age- After age 55, your chances of having a stroke more than double each decade!



ENROLLONG IN THE VASOGRAM CARE PROGRAM

Please call 910-323-0065 to make an appointment for the Vasogram Cardiovascular Assessment and Risk Evaluation. You will receive a reminder call from our staff two days before your scheduled appointment.




TEST PREPARATION

- Wear short sleeve shirt and shorts.
- Arrive at the test center 15 minutes before your scheduled appointment.
- Bring your personal health record if you have one.
- It is recommended that you fast or eat a light meal before the test.

BENEFITS

- Identify heart disease states in the early stages and avoiding expensive, and unnecessary tests.
- Less costly alternative for disease management.
- Fulfills patient need to know and how to try to live longer
- Earlier diagnosis of patients needing statins or other drug therapy for heart disease
- Provides better mortality and morbidity data for underwriting/Actuarial purposes

CONTACT INFORMATION

 Cumberland Cardiology, P.A.
Tochari Center
3505 Village Drive, Suite 201
Fayetteville, NC 28304
Telephone: 910-323-0065
Fax: 910-323-0071